

A dark blue triangular shape in the top-left corner contains a white outline of a car's side profile, facing right.

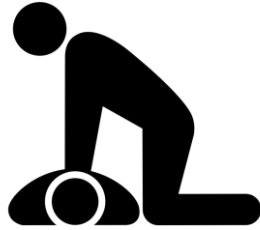
# 8 minutes

# Time is everything for STEMI patients



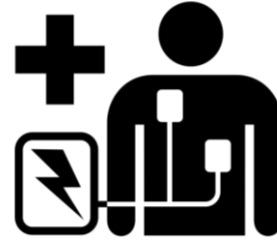
**8 Minutes**

**Response**



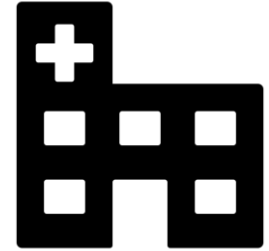
**9 Minutes**

**CPR**



**10 Minutes**

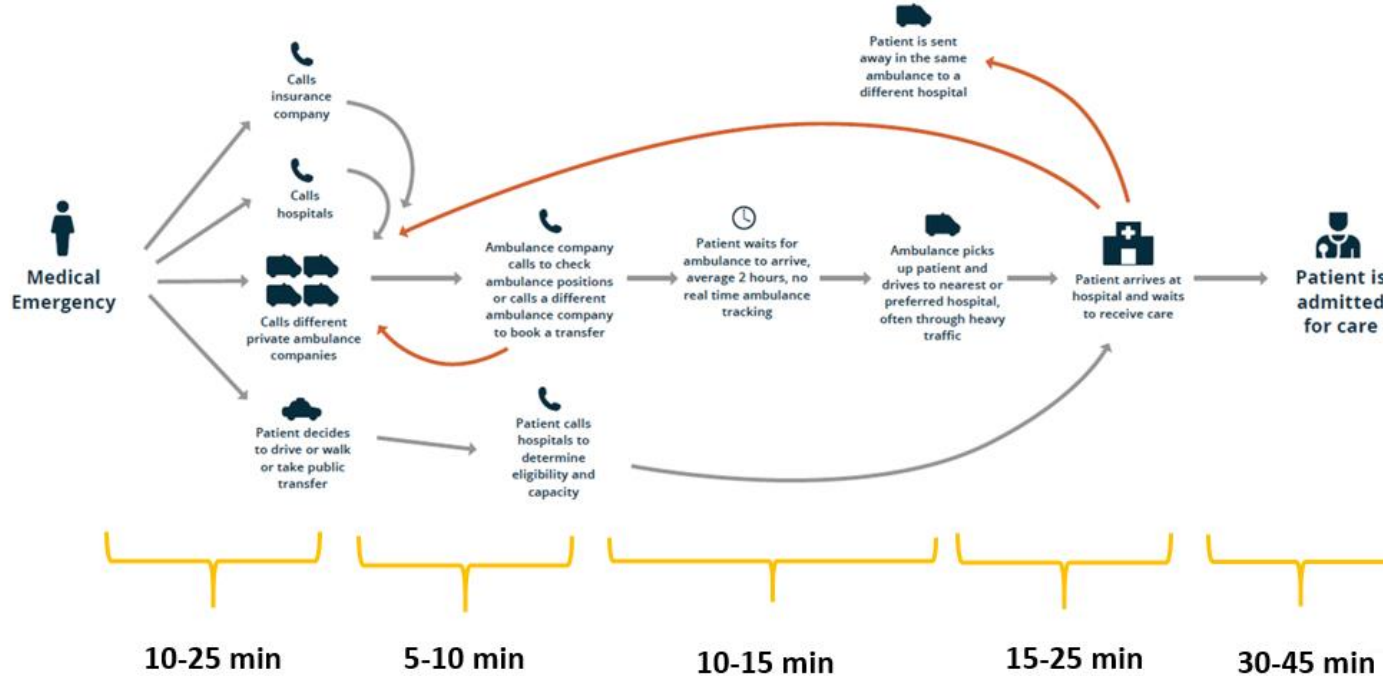
**AED**



**1 hour**

**CATH lab**

# Let's take a look at what's happening in Nairobi and surrounding Counties



= 162  
minutes!

# We are looking to create a new reality where emergency help is minutes away.

---



## Largest fleet

We have the most ambulances and the widest coverage from the best first response companies in Kenya. Locations are tracked in real-time, which means we get you the best service with the shortest response times, no matter where you are.



## One phone number

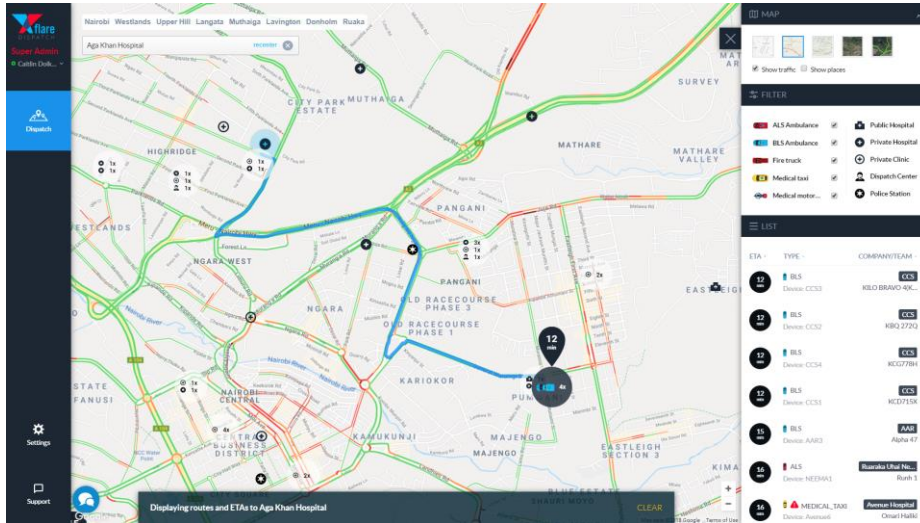
No need to sift through countless numbers. Just call us for access to all providers. Medical professionals on our 24-hour hotline will make sure you get help from the closest responders right away.



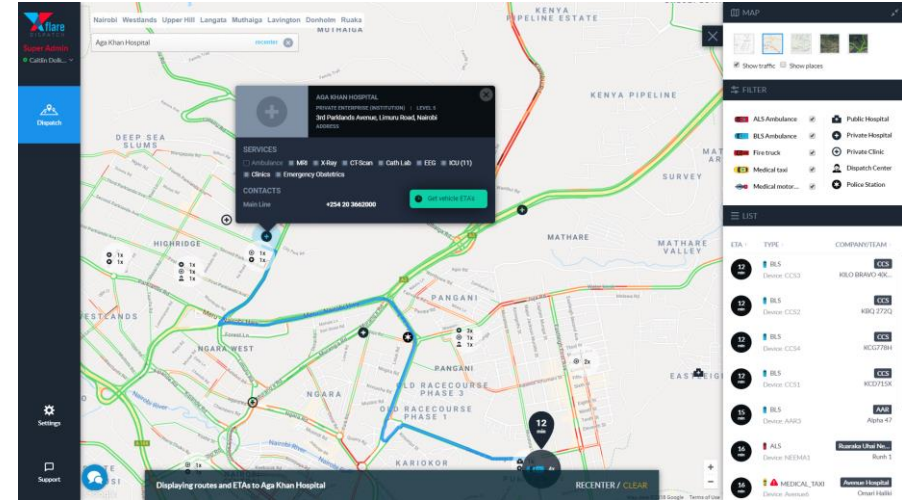
## Fast response

In critical emergencies like heart failure or stroke, you have less than one hour to get care. Do not waste time with countless numbers. Get *Rescue* today to make sure you can access the largest network of Nairobi's best first responders.

We put all ambulances onto one single platform that allows for efficient dispatching and coordination with hospitals



- Put all ambulances onto a central and digital system
- Integrate with google maps to show ETAs
- Map different types of resources

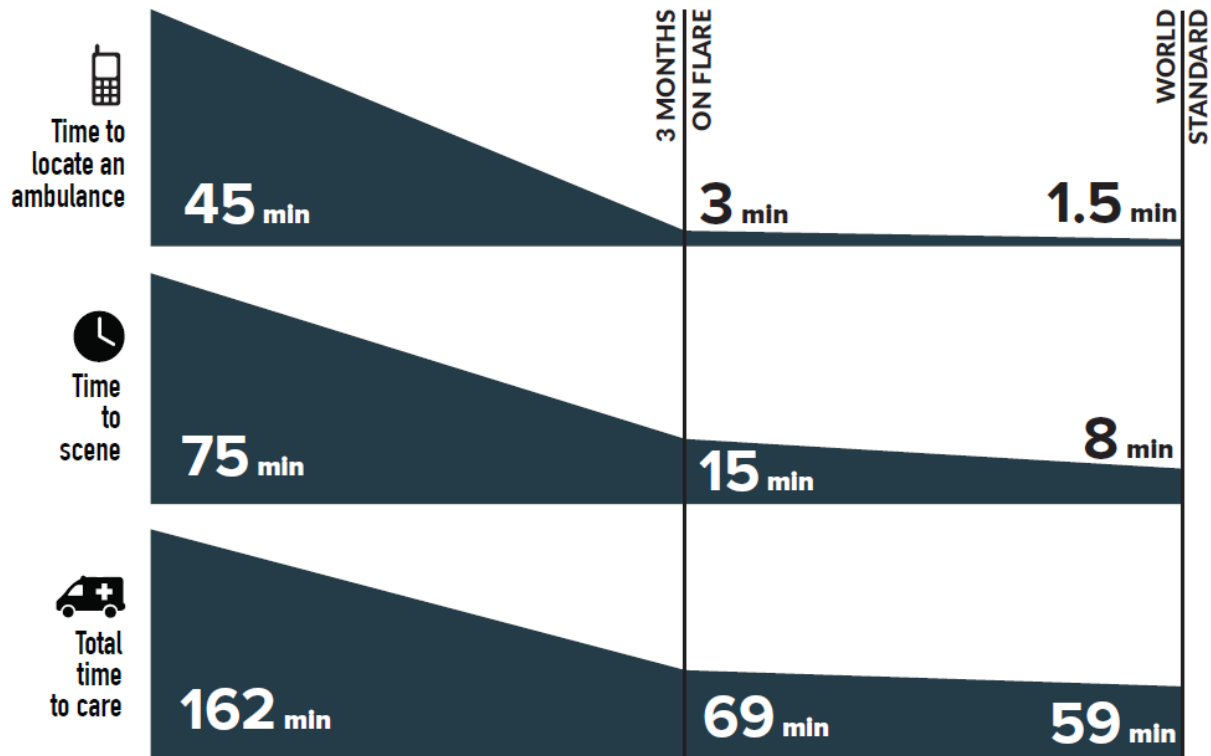


- Add an info card on every hospital with the types of services and contact points
- Promote direction communication with hospitals prior to patient arrival

# This all wouldn't be possible without strong partnerships with ambulance partners



# Here's what we've been able to achieve this past year!





# And a success from 5 hours + outside of Nairobi!

## Case Overview

**Symptoms:** Chest Pain, SIB

**Pick-up Location:** Nyahururu District Hospital

**Admitting Facility:** Aga Khan University Hospital (Nairobi)

**Call Time:** 3:43 pm

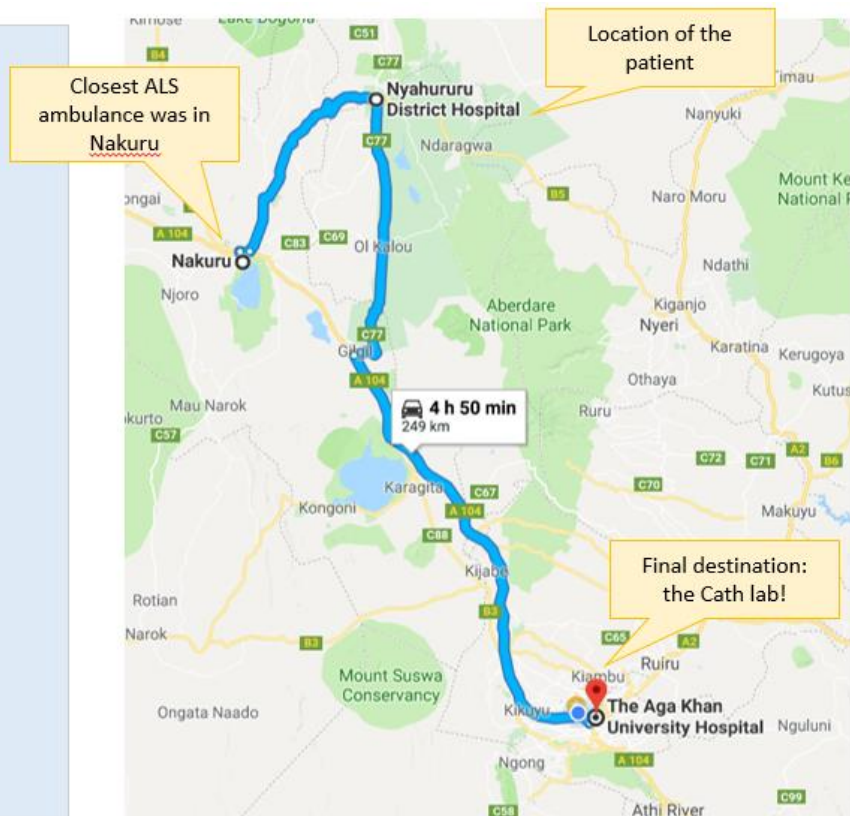
**Wheels moving:** 4:25 pm

**Arrival at Nyahururu:** 5:25 pm

**Hand-over at Aga Khan:** 9:00 pm

**Total trip time:** 5 hours 17 minutes

**Total KMs:** 249 KMs





# Let's work together to do the following in 2018.

- 1. Help identify additional ambulances to include on the Flare network.**
- 2. Make sure your hospital is mapped with the right contacts. That makes a huge difference in an emergency.**
- 3. Map ECGs in ambulances and hospitals. Lay out process to share results with cardiologists.**
- 4. Map AEDs in Nairobi in public places and in ambulances.**
- 5. Create a group for Cardiologists to communicate ambulance needs. Or add us to an existing one!**
- 6. Consider adding in the cost of an ambulance to your costs...?**



# Join Us

**0713-911-911 or [info@rescue.co.ke](mailto:info@rescue.co.ke)**

